

★ 독립부스 시공기업이 타 기업과 부스가 맞닿아 있는 경우
맞닿는 면의 뒷쪽은(아래이미지 참조) 그래픽 시공 불가

그래픽 시공 불가

NC Series



IX Series



KDI Seals



공기압 압축기

32-506



문전지용 압축기



★ 독립부스 시공기업이 타 기업과 부스가 맞닿아 있는 경우
부스 뒷벽을 주최사무국에서 마감 요청 시 필히 마감 필요

뒷벽 마감



★ 전시 종료 후 폐기물이 발생하는 경우
코엑스 지정업체(설명회 자료 참고)를 통해 처리 필요

涤纶覆膜 Polyester with PTFE membrane	130-150℃	excellent	middle
亚克力/Acrylic	130-150℃	excellent	good
聚丙烯 PP	160-190℃	excellent	good
聚酰胺/PA	200-220℃	middle	excellent
聚酰胺/PA	240-260℃	excellent	middle
聚酰胺/PA	240-260℃	excellent	excellent
聚丙烯纤维无纺布 Polypropylene fiber woven fabric	260-280℃	excellent	excellent

企业简介 Company Profile

山东新业环保科技有限公司成立于2001年，公司占地面积为16000㎡，位于济南市莱芜区，交通便利，我们是一家专业从事空气净化除尘、微晶分离设备、针刺毡、机械滤布、催化载体、活性炭载体、分子筛等环保产品的研发、生产、销售的高新技术企业。公司拥有标准化厂房5000余平方，现代化生产线3条。公司主要产品包括：活性氧化铝吸附剂及各类氧化铝催化剂载体、分子筛吸附剂3A、4A、13X等各类产品。公司现有员工100余人，年产分子筛、氧化铝等产品过万吨。公司通过ISO9000质量管理体系认证。2020年被认定为国家级“高新技术企业”，济南市“专精特新”企业，山东省“专精特新”企业。

Shandong Xingye Environmental Technology Corp., established in 2001, our company occupies an area of 16000㎡, we are located in Laiwu high-tech Zone, Ji'nan city, with convenient transportation access. We are a professional manufacturer engaged in the research, development, sale and service of environmental protection products, such as dust collect filter bag, liquid-solid filter cloth, needle punched felt and woven fabric, catalyst and carrier, activated alumina, molecular sieve. Dedicated to strict quality control and thoughtful customer service, our experienced staff members are always available to meet your requirements and ensure full customer satisfaction. In addition, we have obtained ISO9001 certifications. Selling well in all cities and provinces around China, our products are also exported to clients in such countries and regions as Europe, South-east Asia, Mid-east Asia. Our products gain wide praises at home and abroad. We also welcome OEM and ODM orders. Whether selecting a current product from our catalog or seeking engineering assistance for your application, you can talk to our customer service center about your sourcing requirements. Adhering to the business principle of mutual benefits, we have had a reliable reputation among our customers because of our professional services, quality products and competitive price. We warmly welcome customers from at home and abroad to cooperate with us for common success.



企业简介 Company Profile

莱英亿达新材料科技有限公司位于山东省济南市，成立于2016年，是一家专业致力于吸附类微晶材料的研发、生产、销售的高新技术企业。公司拥有标准化厂房5000余平方，现代化生产线3条。公司主要产品包括：活性氧化铝吸附剂及各类氧化铝催化剂载体、分子筛吸附剂3A、4A、13X等各类产品。公司现有员工100余人，年产分子筛、氧化铝等产品过万吨。公司通过ISO9000质量管理体系认证。2020年被认定为国家级“高新技术企业”，济南市“专精特新”企业，山东省“专精特新”企业。

Laiwu Yida New Material Technology Co., Ltd., located in Jinan City, Shandong Province, was established in 2016. It is a high-tech enterprise specializing in the research, development, production and sales of adsorption microcrystalline materials. The company has more than 5,000 square meters of standardized workshops and 3 modern production lines.

The company's main products include: activated alumina adsorbents and various alumina catalyst carriers, molecular sieve adsorbents 3A, 4A, 13X and other products. The company has more than 100 employees, and the annual output of molecular sieve, alumina and other products exceeds 10,000 tons. The company passed the ISO9000 quality system management certification in 2020. It is a national-level "high-tech enterprise", a "specialized and innovative" enterprise in Jinan, and a "specialized and innovative" enterprise in Shandong.



폐기물 처리



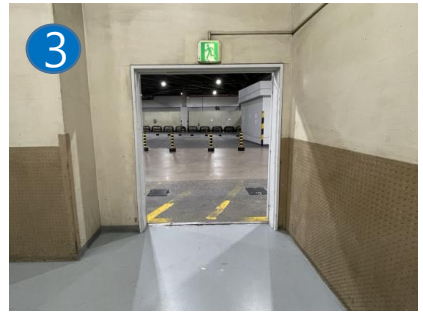
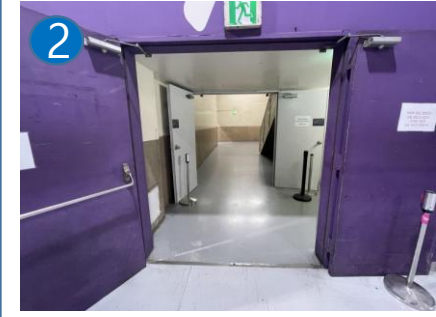
화물주차장

※ 전시기간(5/20~5/22) 화물주차장 이동통로는
아래 시간동안 오른쪽 이미지 처럼 오픈됩니다.

- 5월 20일(수) : 08시~19시 오픈, 19시 이후 닫힘
- 5월 21일(목) : 09시~19시 오픈, 19시 이후 닫힘
- 5월 22일(금) : 09시~16시 오픈, 16시 이후 완전개방



가로 0.9m
세로 2.1m



가로 1.8m
세로 2m

ENVEX
ENVIRONMENTAL EXHIBITION

▶ 부스높이 제한
- LINE 1~2 : 4m
- LINE 3~4 : 4.5m
- LINE 5이상 : 5m

● 기둥 1,200mm x 1,200mm
■ 소화전



가로 0.9m
세로 2.09m

